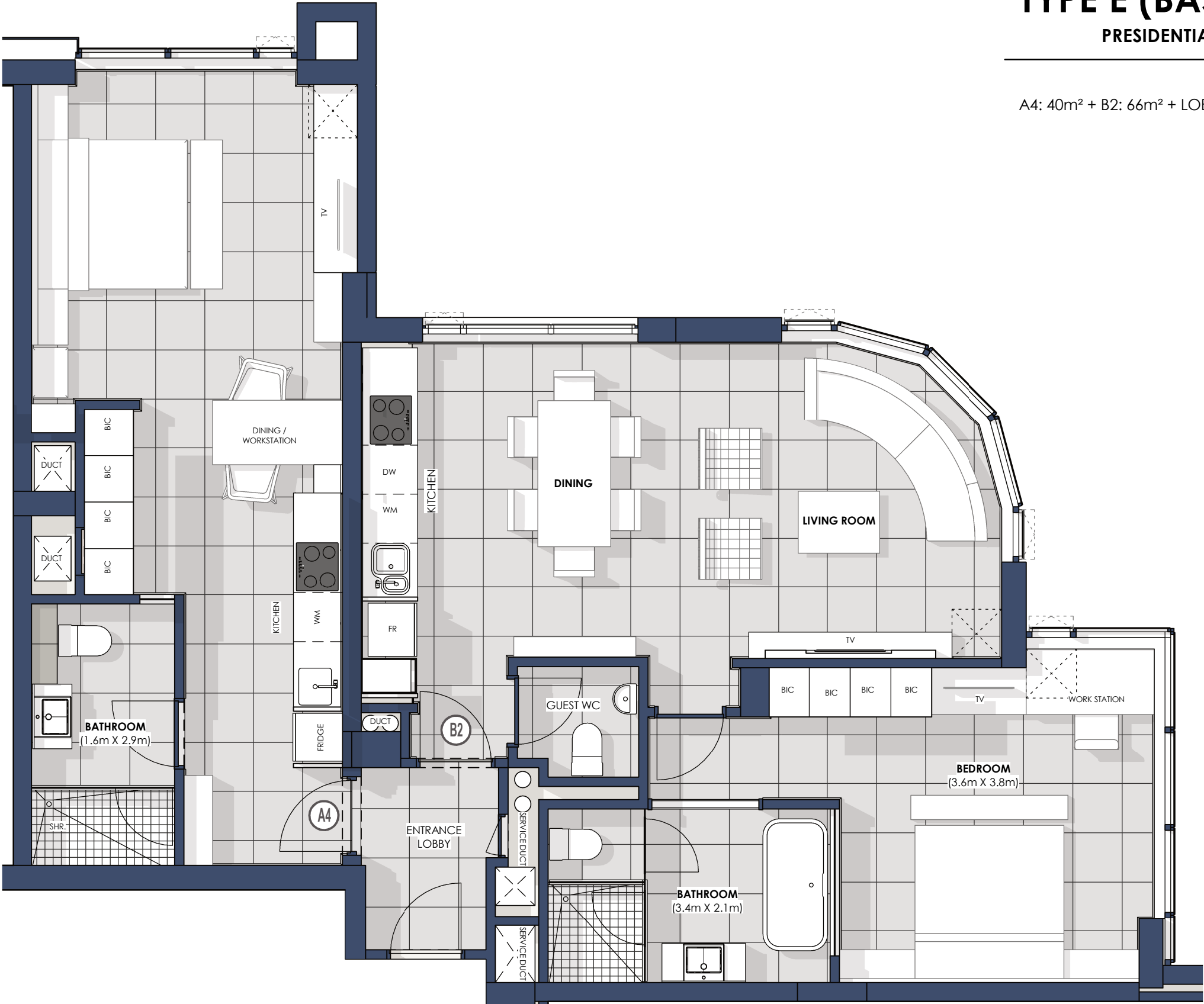


TYPE E (BASE - Fully Tiled)

RESIDENTIAL 2 BED CORNER APARTMENT

TOTAL AREA: 136m²

A4: 40m² + B2: 66m² + LOBBY 4m² + 26m² COVERED PARKING



SANDTON SKYE

NOTE:
 - DIMENSIONS ARE APPROXIMATE AND ACTUAL AS-BUILT DIMENSIONS MAY VARY
 - UNLESS SOLD AS FURNISHED ALL UNITS ARE UNFURNISHED
 - PLANS ARE NOT TO SCALE

